

# Overview of 3D-modelling activities at Geological Surveys

Questionnaire to be sent to all European Geological Surveys

- Motivation:
  - state of 3D geological modelling / model delivery very heterogeneous across Europe

# Overview of 3D-modelling activities at Geological Surveys

Questionnaire to be sent to all European Geological Surveys

- Motivation:
  - state of 3D geological modelling / model delivery very heterogeneous across Europe
- Purpose:
  - find common ground for future EU-wide projects

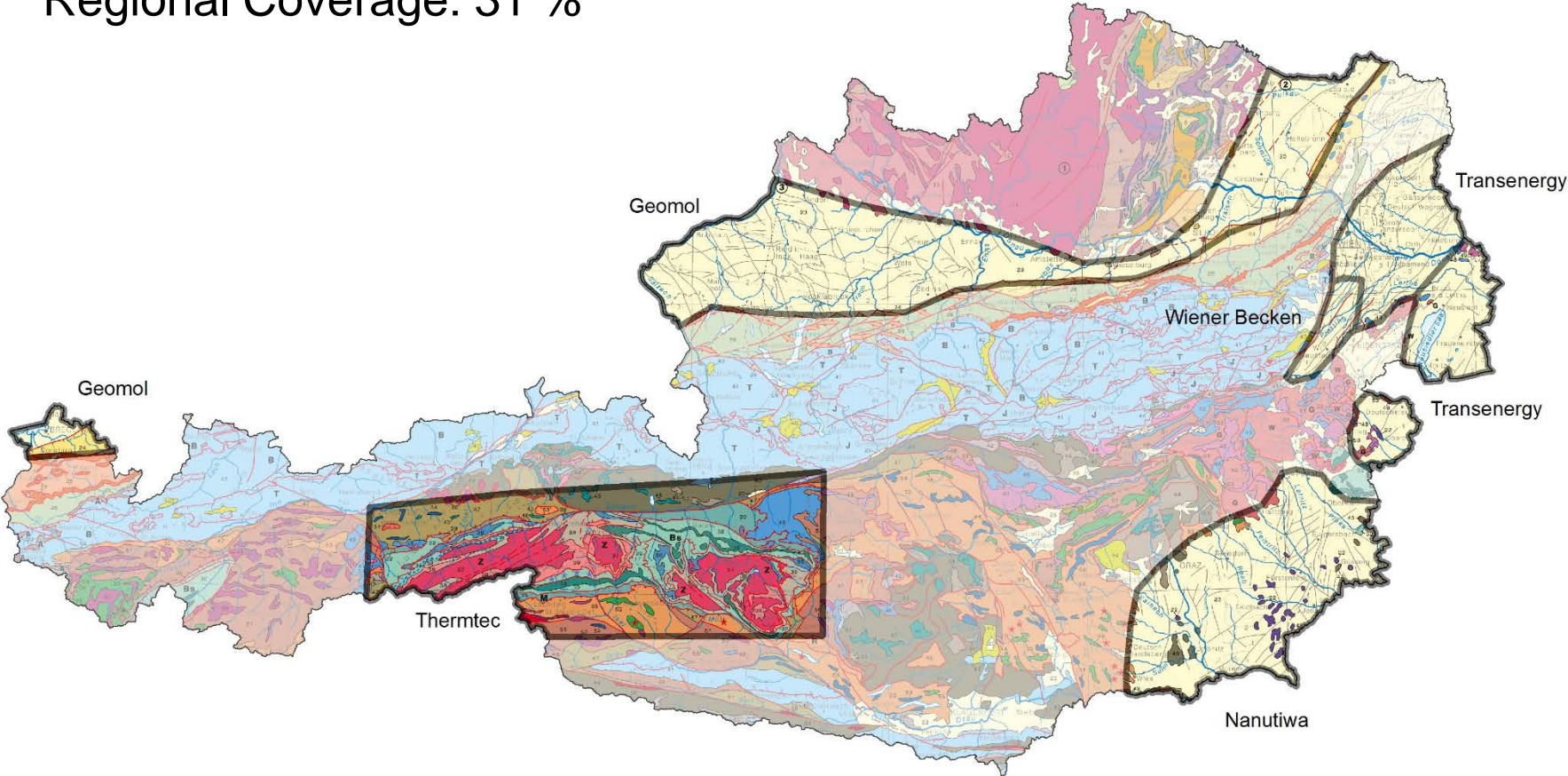
# Overview of 3D-modelling activities at Geological Surveys

Questionnaire to be sent to all European Geological Surveys

- What is the coverage of your country by 3D geological models / at what resolution?

# Overview of 3D-modelling activities at Geological Surveys

Regional Coverage: 31 %

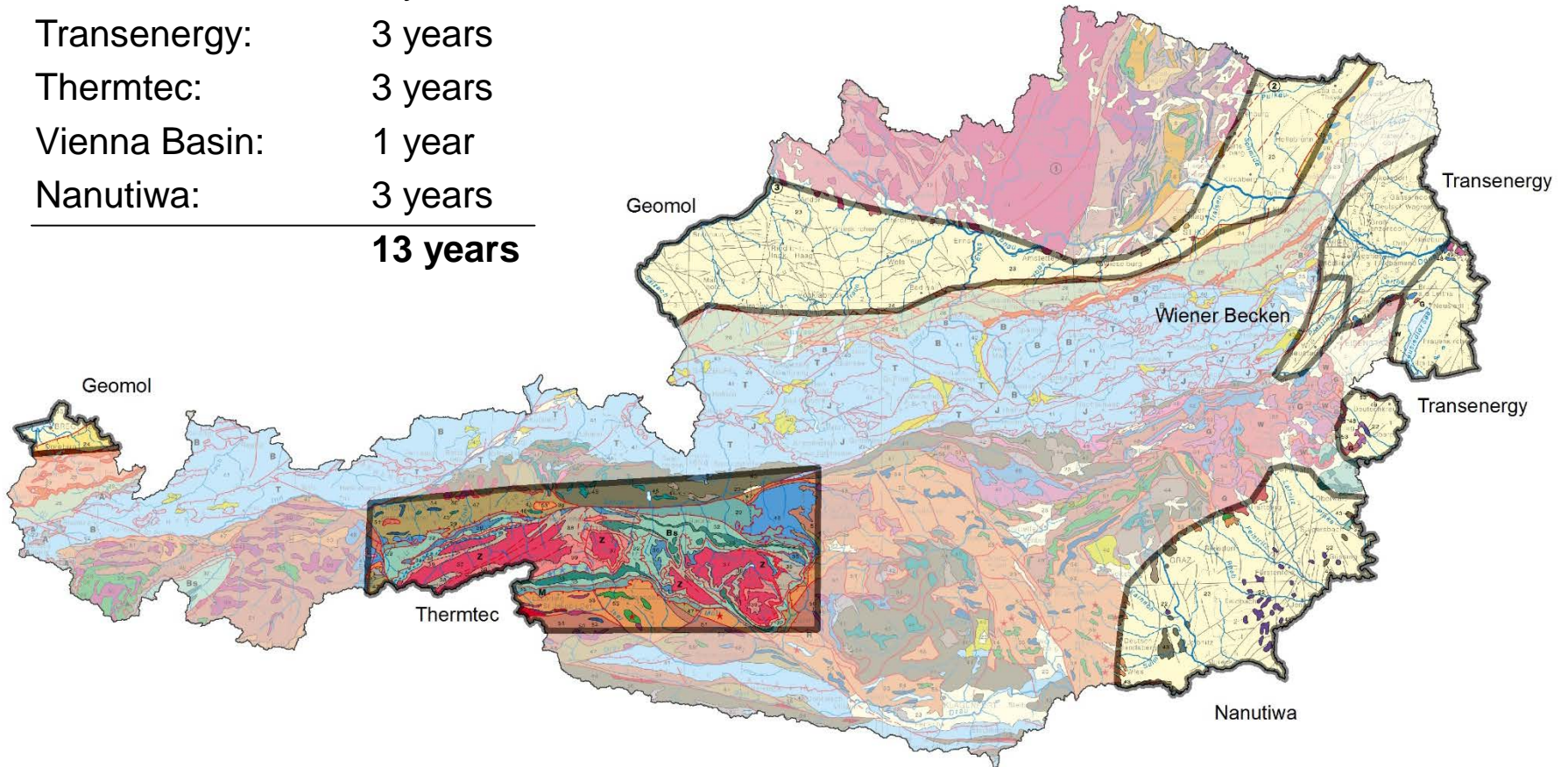


# Overview of 3D-modelling activities at Geological Surveys

- What is the coverage of your country by 3D geological models / at what resolution?
- How much time went into this?
  - separate mapping, profile construction, data preparation, modelling

# Overview of 3D-modelling activities at Geological Surveys

Geomol:	3 years
Transenergy:	3 years
Thermtec:	3 years
Vienna Basin:	1 year
Nanutiwa:	3 years
<hr/>	
	<b>13 years</b>



# Overview of 3D-modelling activities at Geological Surveys

- What is the coverage of your country by 3D geological models / at what resolution?
- How much time went into this?
- What resources went into this, i.e. how many person-years went into modelling, what is the rough budget allocated to 3D modelling?

# Overview of 3D-modelling activities at Geological Surveys

- What is the coverage of your country by 3D geological models / at what resolution?
- How much time went into this?
- What resources went into this, i.e. how many person-years went into modelling, what is the rough budget allocated to 3D modelling?
- What resources went into IT infrastructure (model storage, delivery)?



# Overview of 3D-modelling activities at Geological Surveys

- What is the coverage of your country by 3D geological models / at what resolution?
- How much time went into this?
- What resources went into this, i.e. how many person-years went into modelling, what is the rough budget allocated to 3D modelling?
- What resources went into IT infrastructure (model storage, delivery)?
- What percentage of these resources is government-funded, what is funded by third parties?

# Overview of 3D-modelling activities at Geological Surveys

- Time schedule:
  - send out questionnaire by end of November via surveymonkey
  - replies by end of December
  - report by end of January
- Comments? Feed-back?

Sebastian Pfliederer  
Holger Kessler

[sebastian.pfliederer@geologie.ac.at](mailto:sebastian.pfliederer@geologie.ac.at)  
[hke@bgs.ac.uk](mailto:hke@bgs.ac.uk)