

Poland – country update

**Ewa Szykaruk, Urszula Stępień,
Zbigniew Małolepszy, Tomasz Żuk,
& PGI-NRI Modelling Team**



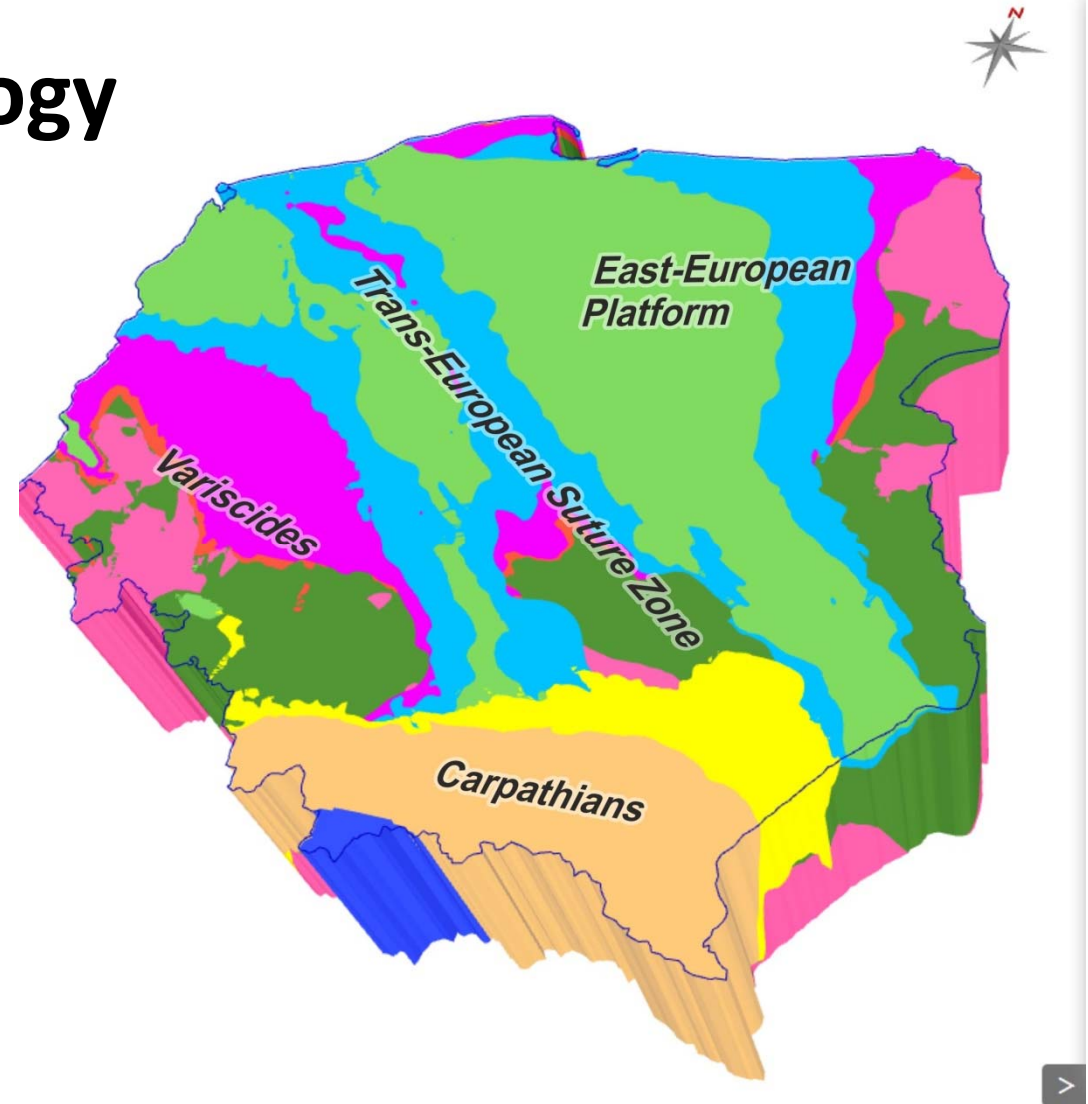
Orleans, 21 February 2018

Polish Geological Institute
National Research Institute

www.pgi.gov.pl

THREE MAIN ROADS TOWARDS 3D GEOLOGY OF POLAND

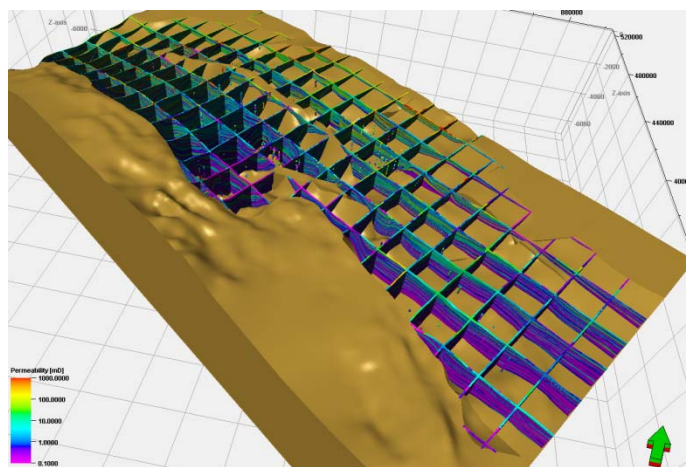
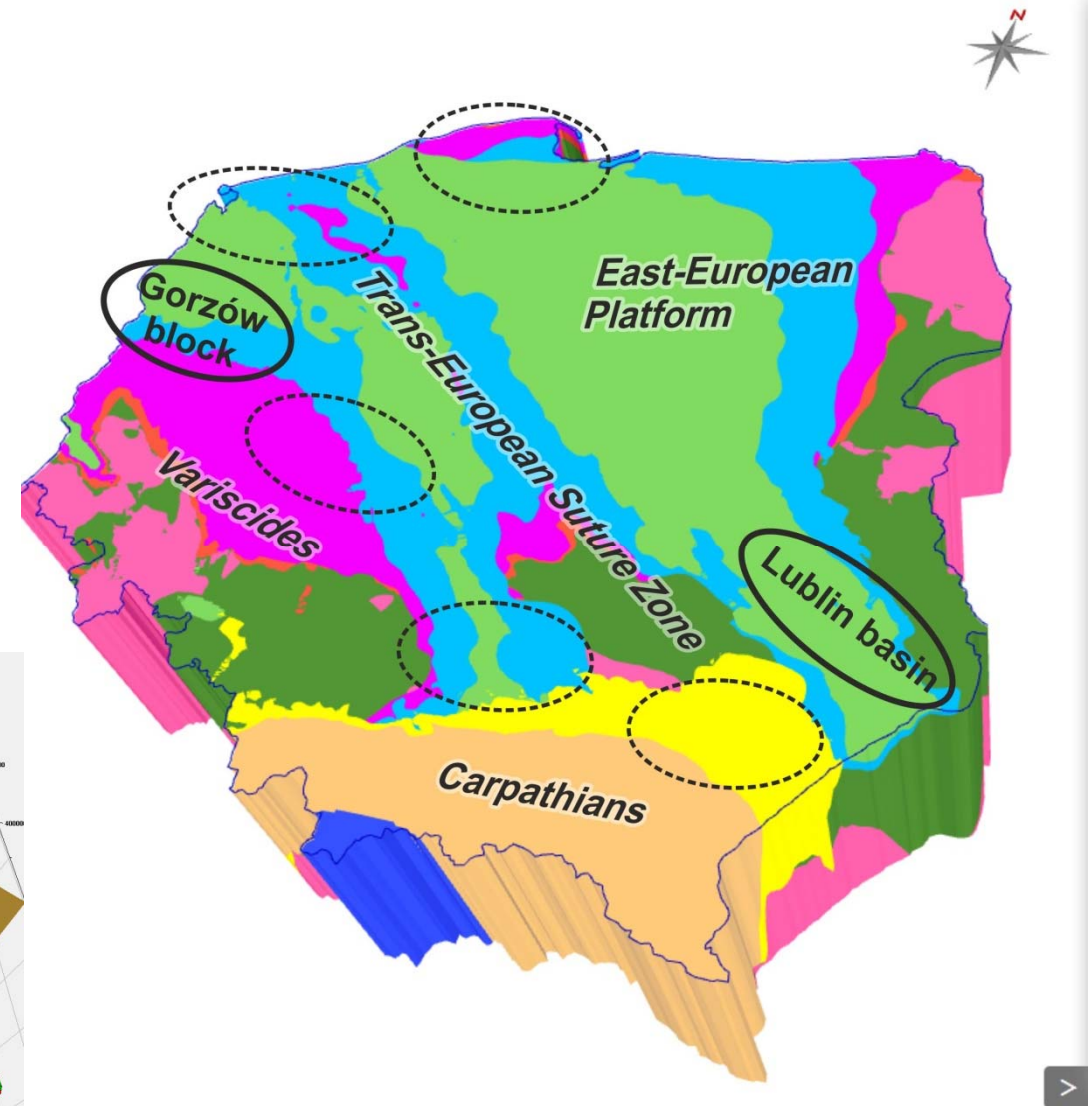
**1. Framework geology
at national scale**
> opportunities
and challenges



THREE MAIN ROADS TOWARDS 3D GEOLOGY OF POLAND

2. Sedimentary basins

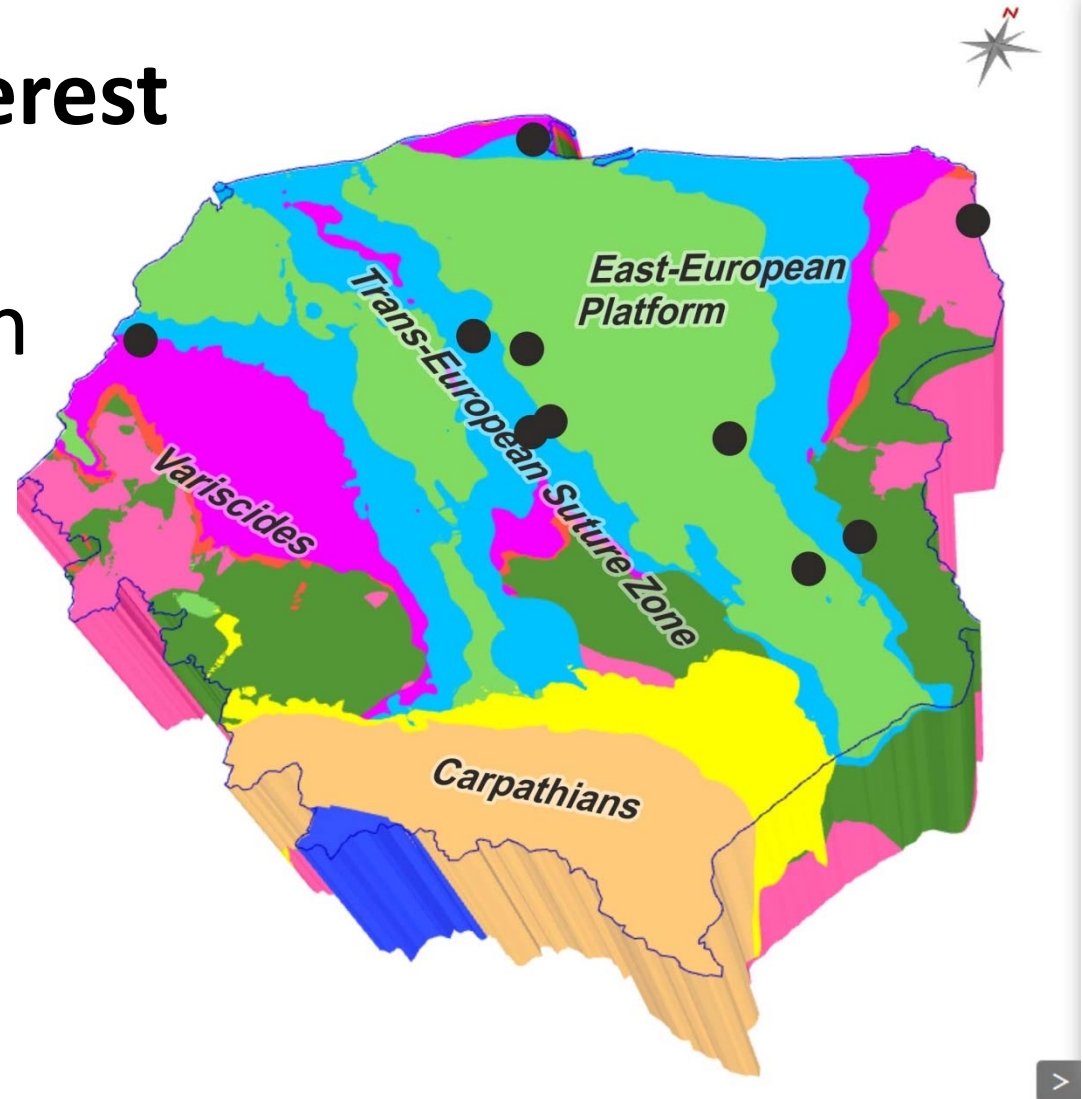
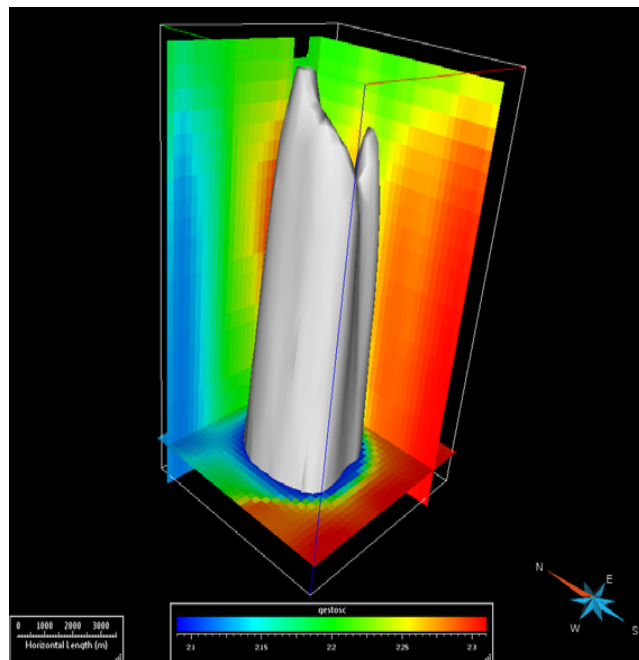
> where most of our activity concentrate



THREE MAIN ROADS TOWARDS 3D GEOLOGY OF POLAND

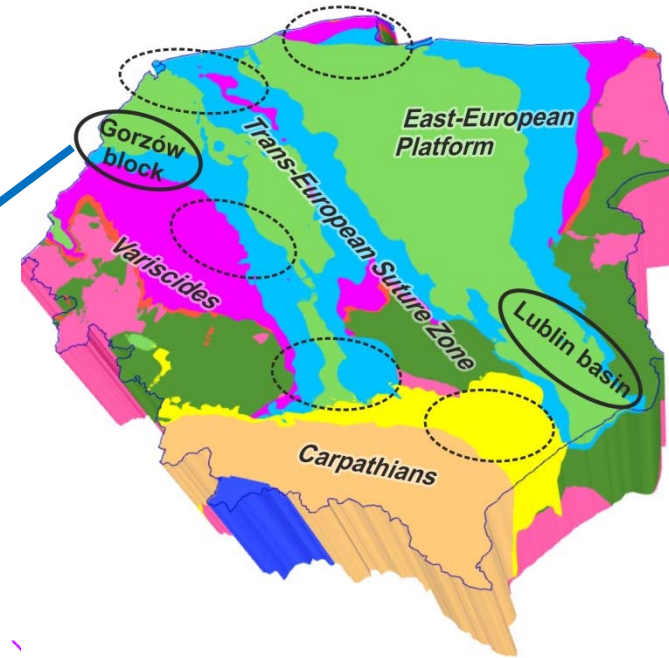
3. Structures of interest

> where we need detailed information

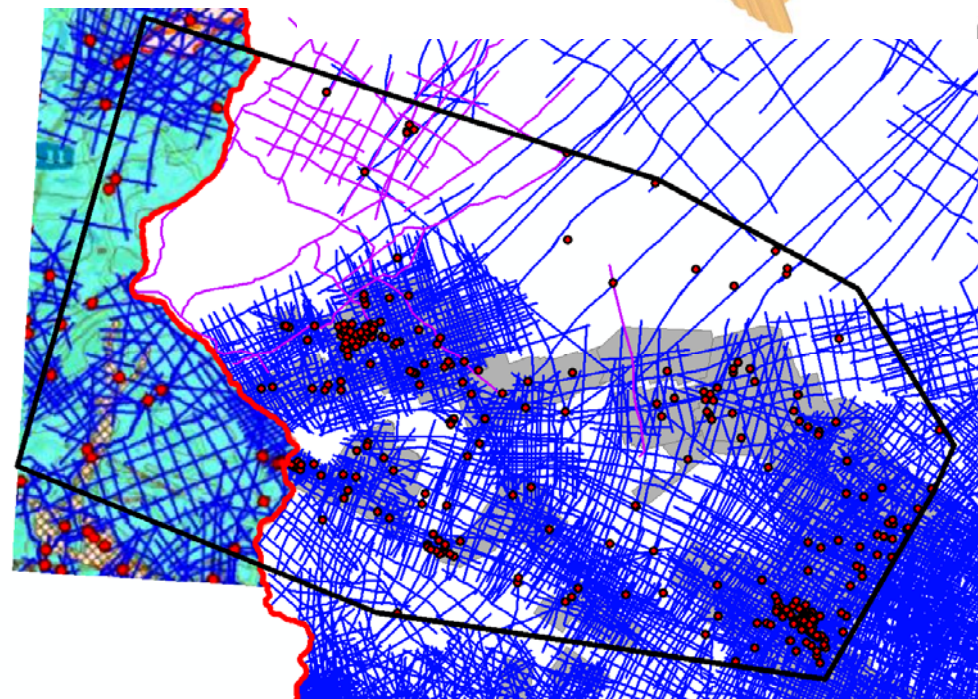


CROSSING BOUNDARIES

> going West...



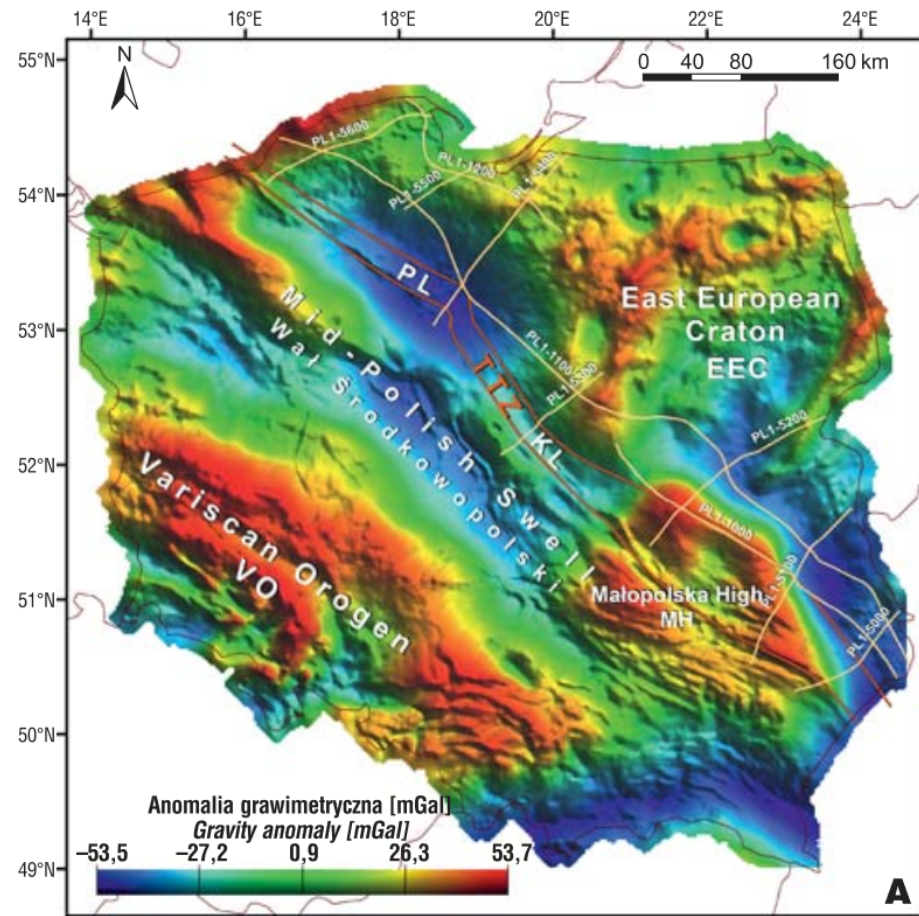
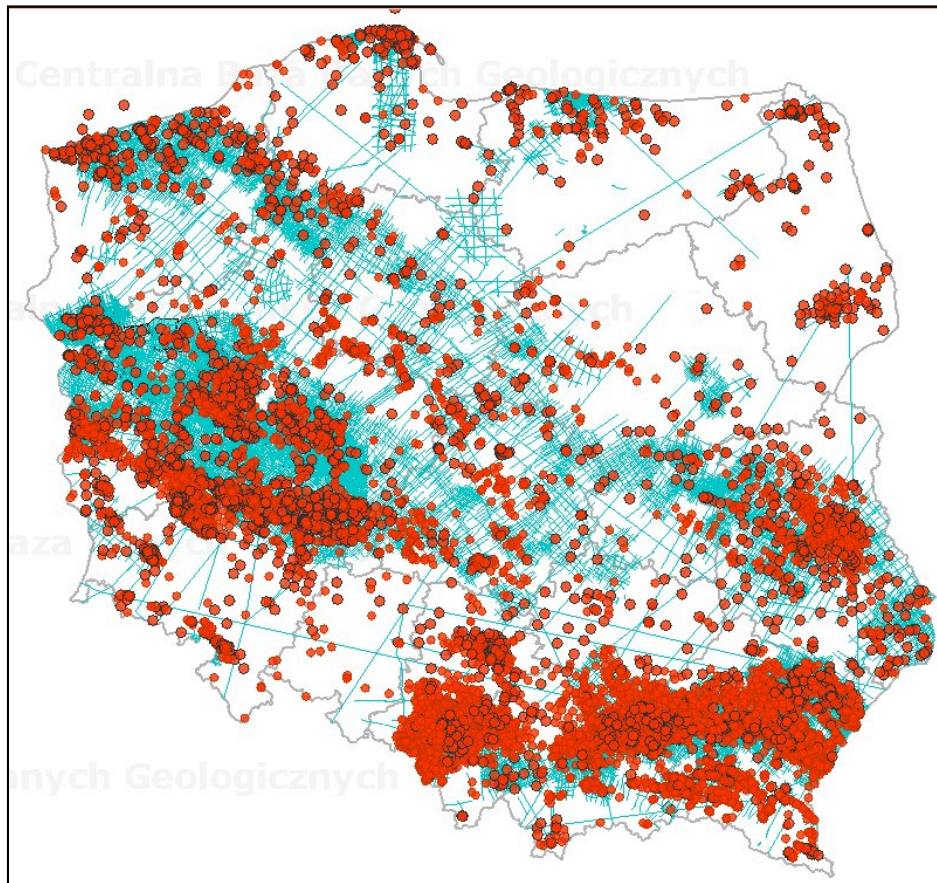
Alter	Epoche	Stratigraphische Einheit	Definition nach GTA	Definition nach GPK	abgestimmte TUNB Horizonte	3D model of Gorzów Block Main seismic reflectors (informal zone colours)
1.8 Ma	Quartär	Quartär				
24 Ma	Neogen (Jungtertiär)	Miozän				
		Oligozän	toIR	A1	„toIR/A1“	
65 Ma	Paläogen (Albtertiär)	Eozän	tpa	T1	„Transgression Känozoikum“	
		Obermiozän				
		Maastricht				
		Santon				
59 Ma	Oberkreide	Coniac				
		Turon	kro	B2/T2	„Alb-Cenoman-Transgression“	
		Apt				
		Alb				
144 Ma	Unterkreide	Valangin				
		Barrem				
		Hauteriv				
		Berrias				
159 Ma	Malm (Oberer Jura)	Sergius				
		Münster-Mergel				
		Emmendingen F.-L.				
		Gips-Schichten				
180 Ma	Dogger (Unterer Jura)	Kimmeridge				
		Korallenkalk				
		Heimener Sch.				
		Galvo				
206 Ma	Lias (Unterer Zura)	Burhan				
		Jeuc				
		Aalen				
		Tenn				
231 Ma	Keuper	Prerubach				
		Brenner				
		Hettang				
		Spangenbergkeuper				
240 Ma	Muschelkalk	Oberer Gipskeuper				
		Unterer Gipskeuper				
		Lettenkeuper				
		Milch. Muschelkalk				
251 Ma	Mitt. Buntsandstein	Os. Muschelkalk				
		Rot.				
		Bolling-Folge				
		Hartigum-Folge				
258 Ma	Unt. Buntsandstein	Völpelkalk-Folge				
		Bernburg-Folge				
		Cadeby-Folge				
		Möln-Zyklus				
258 Ma	Zechstein	Friedrich-Zyklus				
		Olpe-Zyklus				
		Lüne-Zyklus				
		Städel-Zyklus				
258 Ma		Werra-Zyklus				
		Oberniederrand				



CROSSING BOUNDARIES

Beyond seismics and wells

> gravimetry

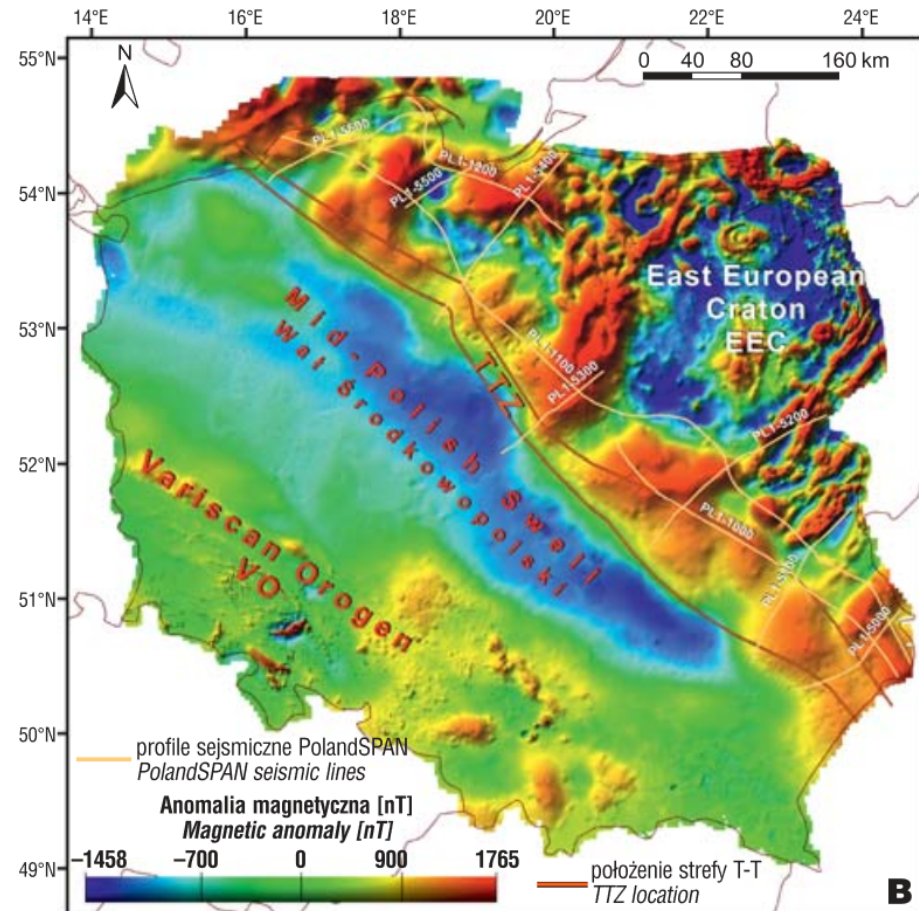
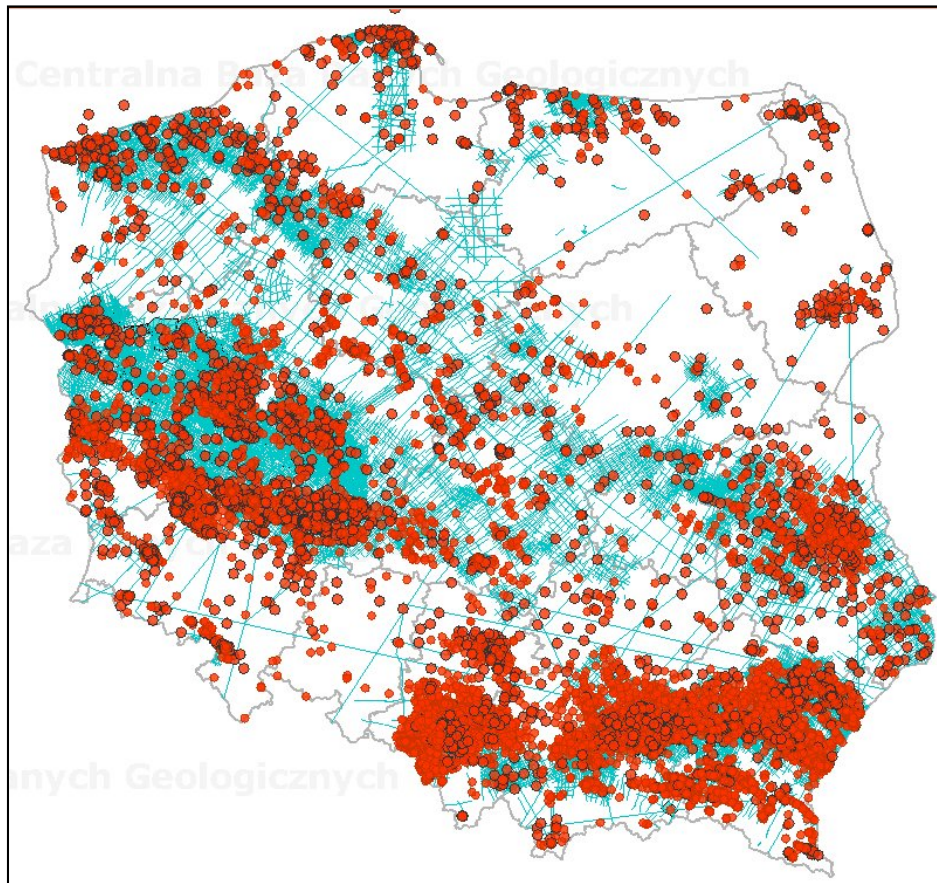


Mazur et al. 2017. Przegląd Geologiczny, 65(12).

CROSSING BOUNDARIES

Beyond seismics and wells

> magnetics



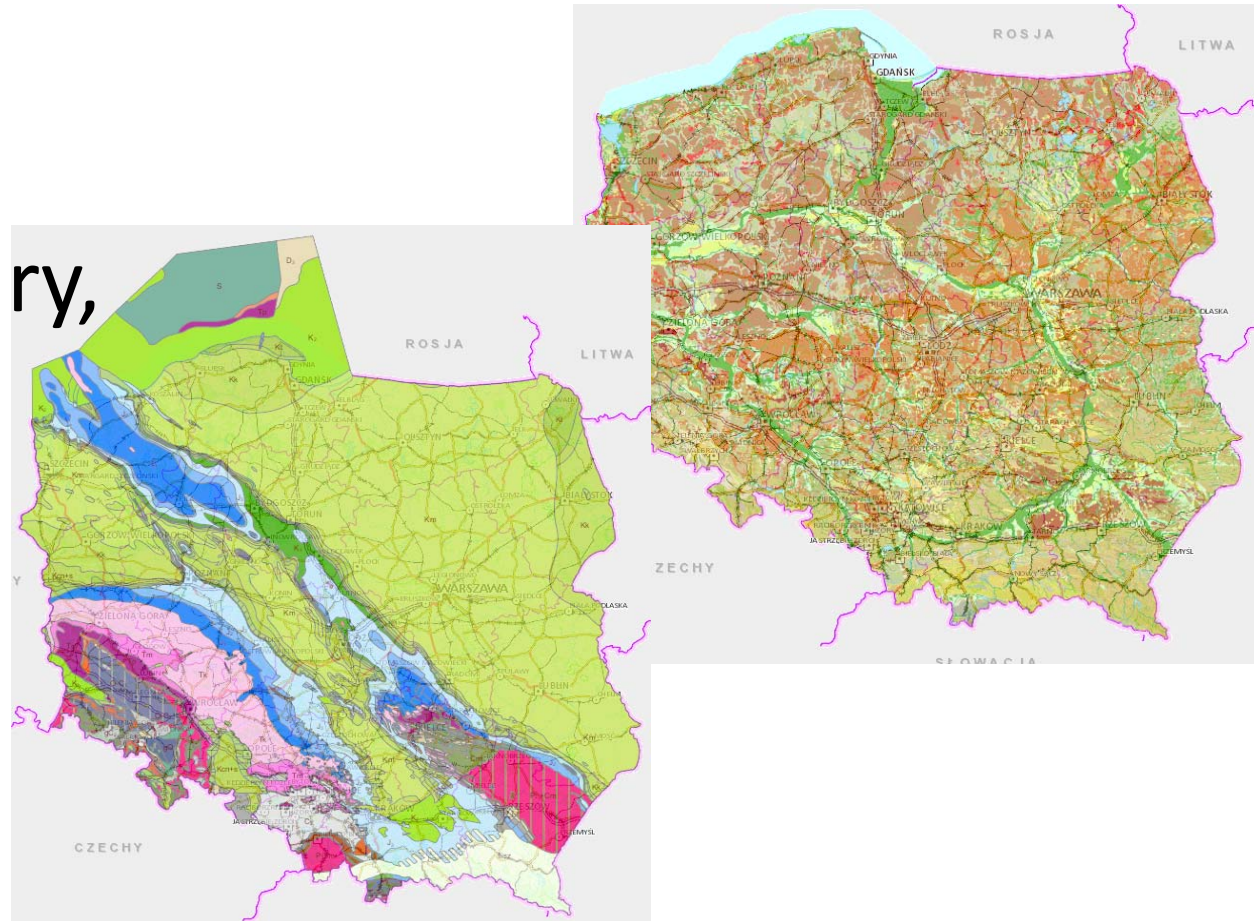
Mazur et al. 2017. Przegląd Geologiczny, 65(12).



NEW MAPS ON BOARD

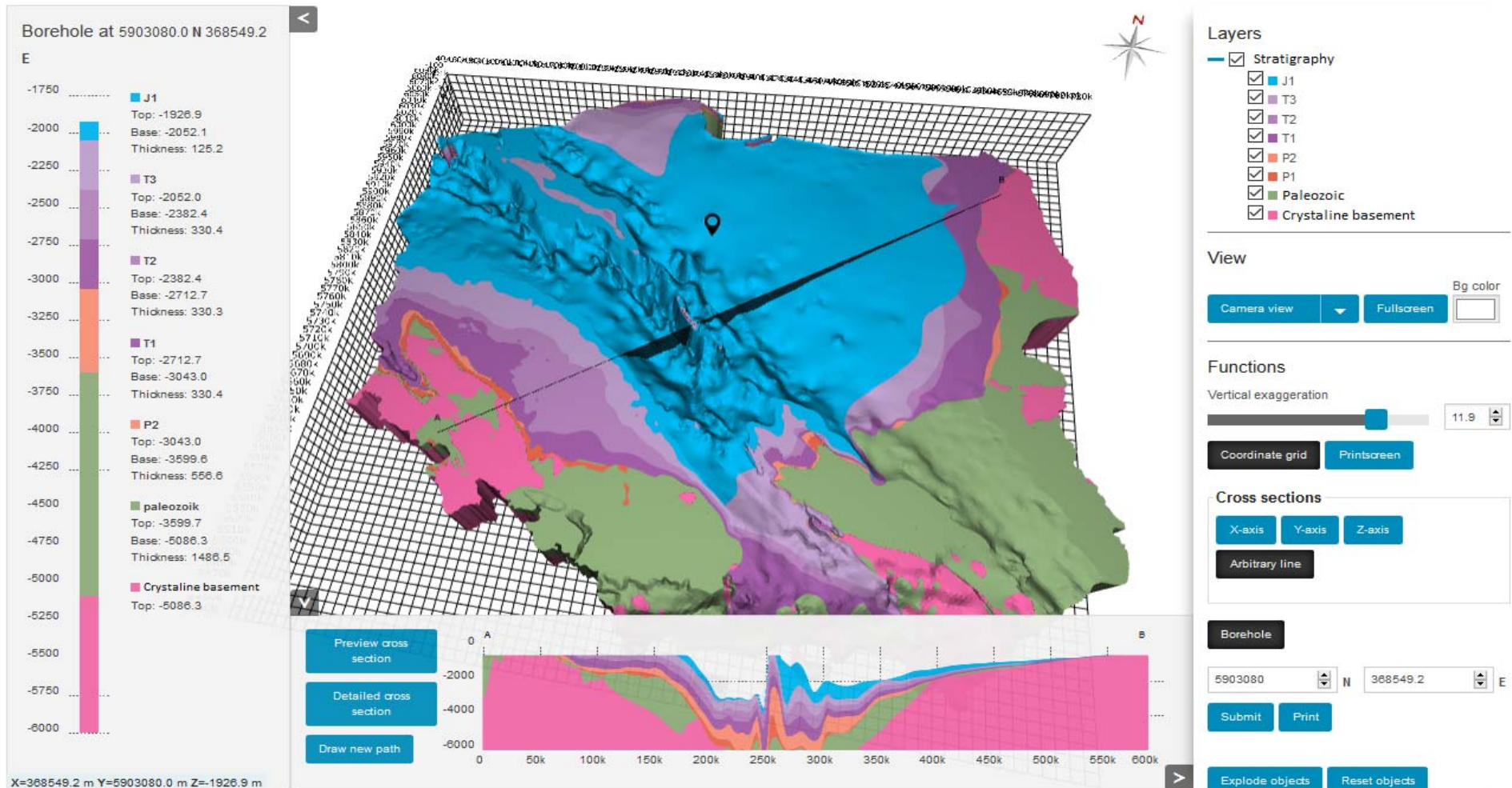
3 new geological maps of Poland at 1:500k scale, ready-made for Framework geology of Poland and GeoSciML, INSPIRE and IQAME compliant:

- > superficial,
- > sub-Quaternary,
- > sub-Cenozoic



WEB VIEWER

> new approach for visualization of 3D geology along with rock properties and other parameters



Thank you very much for your attention!

Please do not miss the poster presentation tomorrow on: Innovative approach to reconstruction of facies distribution based on analogue study with 3D GPR data and multiple point statistics.

